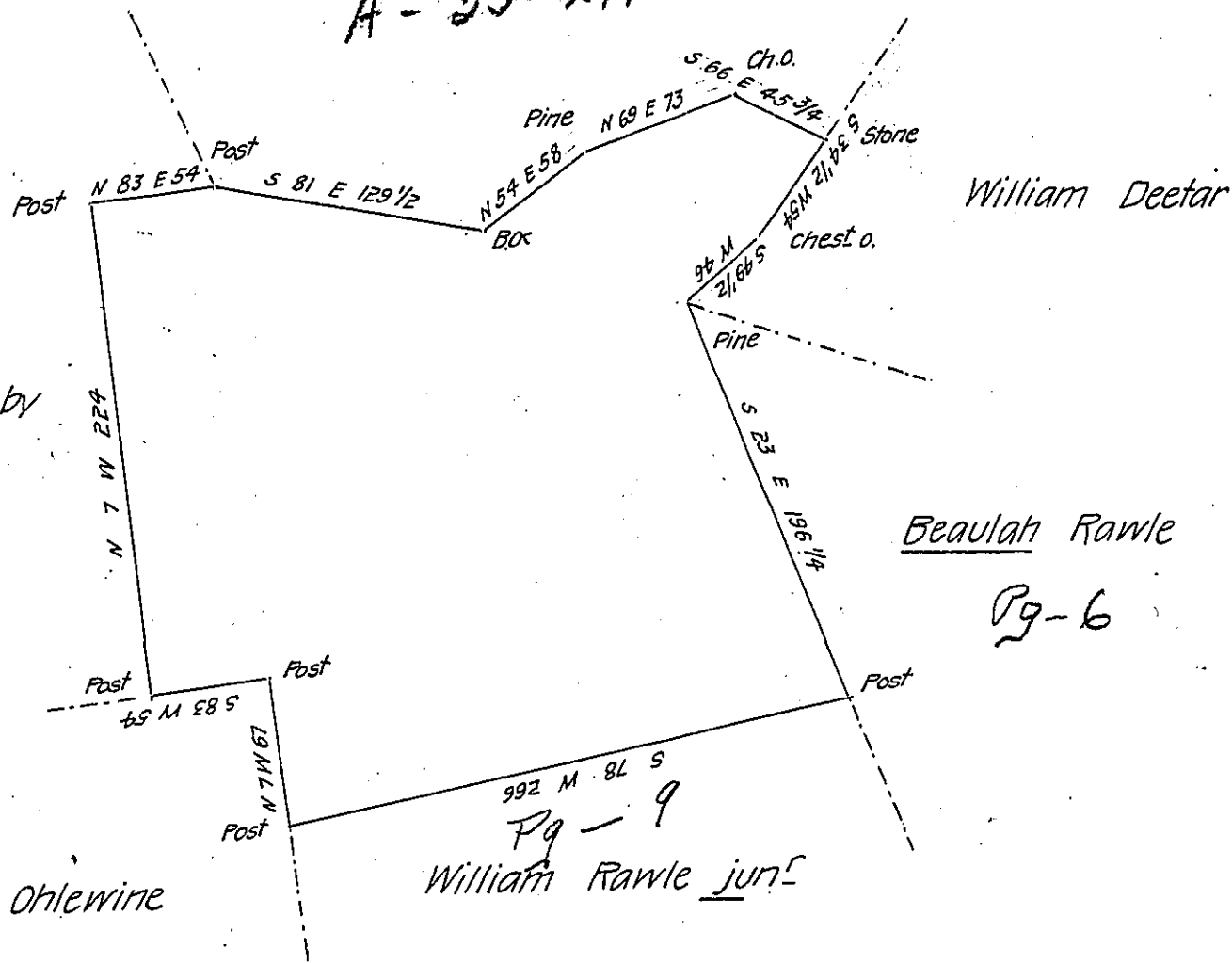


FORM No. 1.

Henry Benninger

A - 35 - 291

Land applied for by
Thomas Craig



Late Michael Ohlewine

Pg - 9
William Rawle junr

By virtue of a warrant dated the 26 July 1792 Surveyed the
 29th April 1794 to Rebecca Rawle the above described tract of land
 situate in Towamensing Township Northampton County Containing four
 hundred and thirty nine acres a quarter and the allowance of six P
 Cent &c^o

P-Geo. Palmer D.S.

To Daniel Brodhead Esquire
 Surveyor General.

IN TESTIMONY that the above is a copy of the original remaining on file in
 the Department of Internal Affairs of Pennsylvania, made
 conformably to an Act of Assembly approved the 16th day of
 February, 1833, I have hereunto set my Hand and caused
 the Seal of said Department to be affixed at Harrisburg,
 this tenth day of October 1906.

Geo. P. Palmer
 Secretary of Internal Affairs.

227